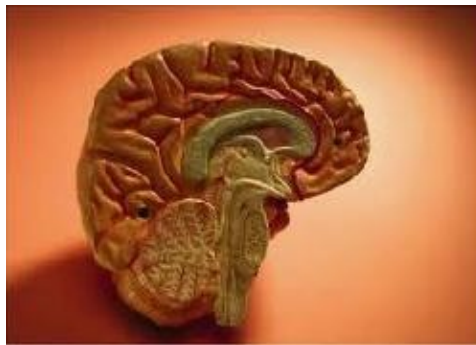


HALF A MIND

HALF A MIND

By : moonphish

half a mind is a terrible thing to waste



Published on
Booksie

booksie.com/moonphish

Copyright © moonphish, 2015
Publish your writing on Booksie.com.

HALF A MIND

i may not have a high IQ

in triple digits maybe
it doesn't take intelligence
to know i dig ya baby
its obvious that you're my kind
and though not known as clever
i find that i have half a mind
to love you till forever

i may not study calculus
or higher forms of science
but you can put your faith in me
and count on my reliance
we'll be dynamic when combined
whenever we endeavor
i find that i have half a mind
to love you till forever

i may not be the brightest bulb
i'm average in my wattage
but i will be your shining knight
and share with you my cottage
just say with me that you will bind
and not with whomsoever
i find that i have half a mind
to love you till forever

i'll now say something stupid
and i hope you will not laugh
i hope to find
that your own mind
will be the other half

HALF A MIND

HALF A MIND

Created from Booksie.com

Generated: 2015-01-27 23:16:46